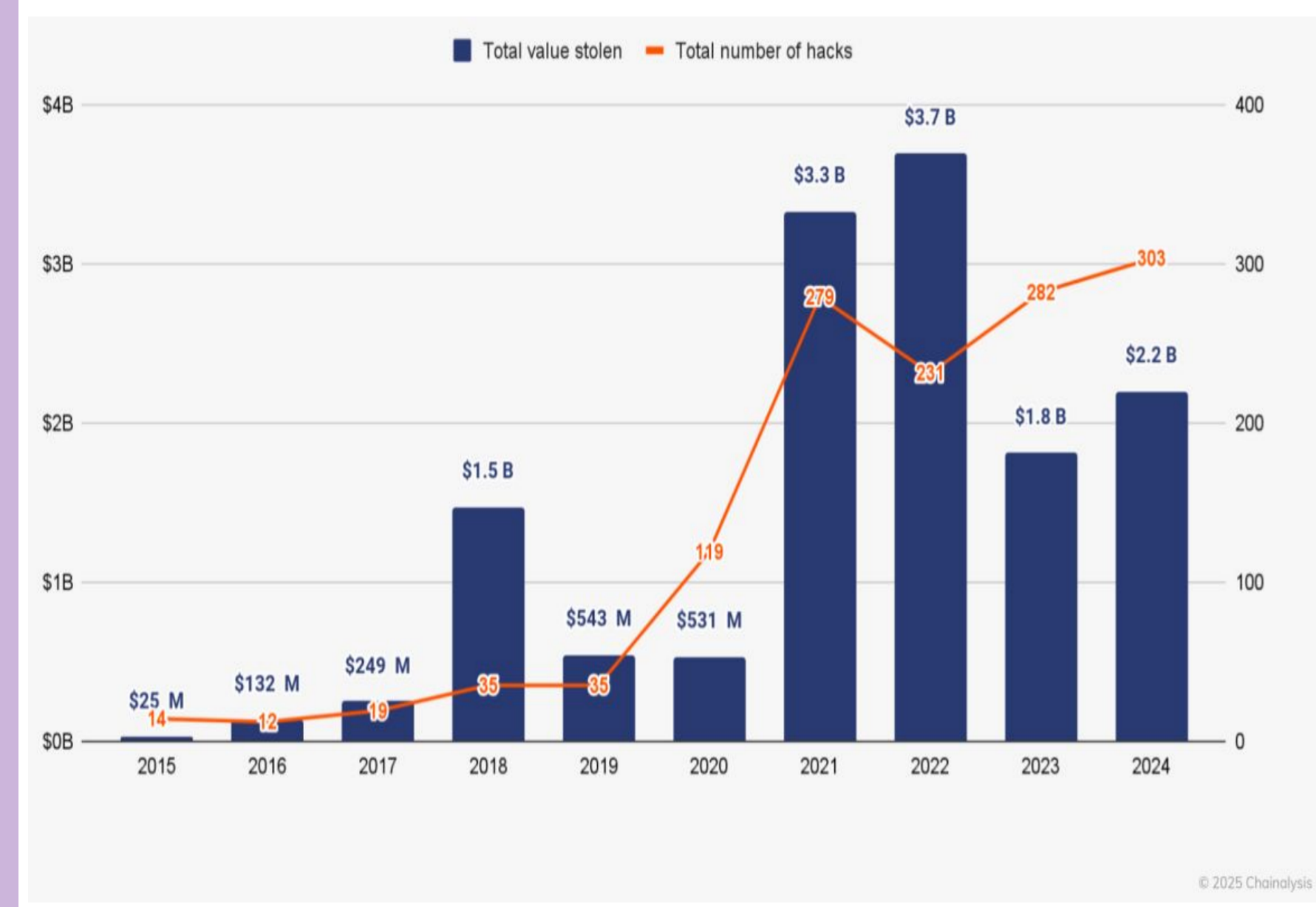


Why It Matters?

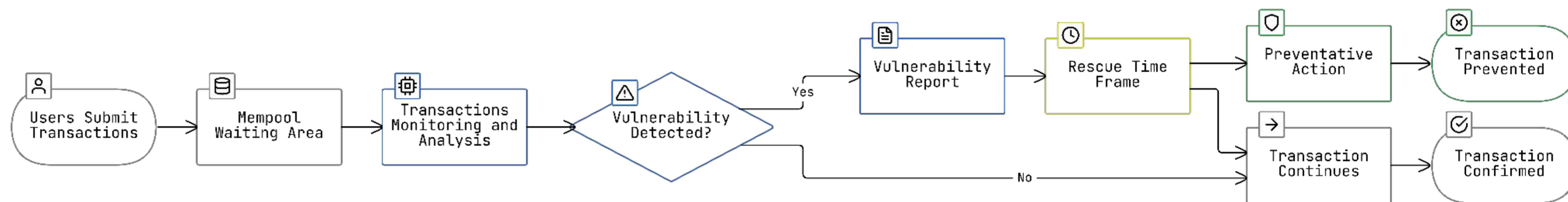
- A **transaction** records cryptocurrency transfers or smart contract execution.
- Ethereum processes **~1.25M transactions daily**.
- Transactions are confirmed in **15 seconds to 5 minutes** (rescue time frame).
- **Cryptocurrency attacks cost \$2.2B in 2024**, up 21% year-over-year.
- **Challenges:**
 - Detect malicious transactions *before* confirmation.
 - Enable *real-time* detection with interpretable explanations.



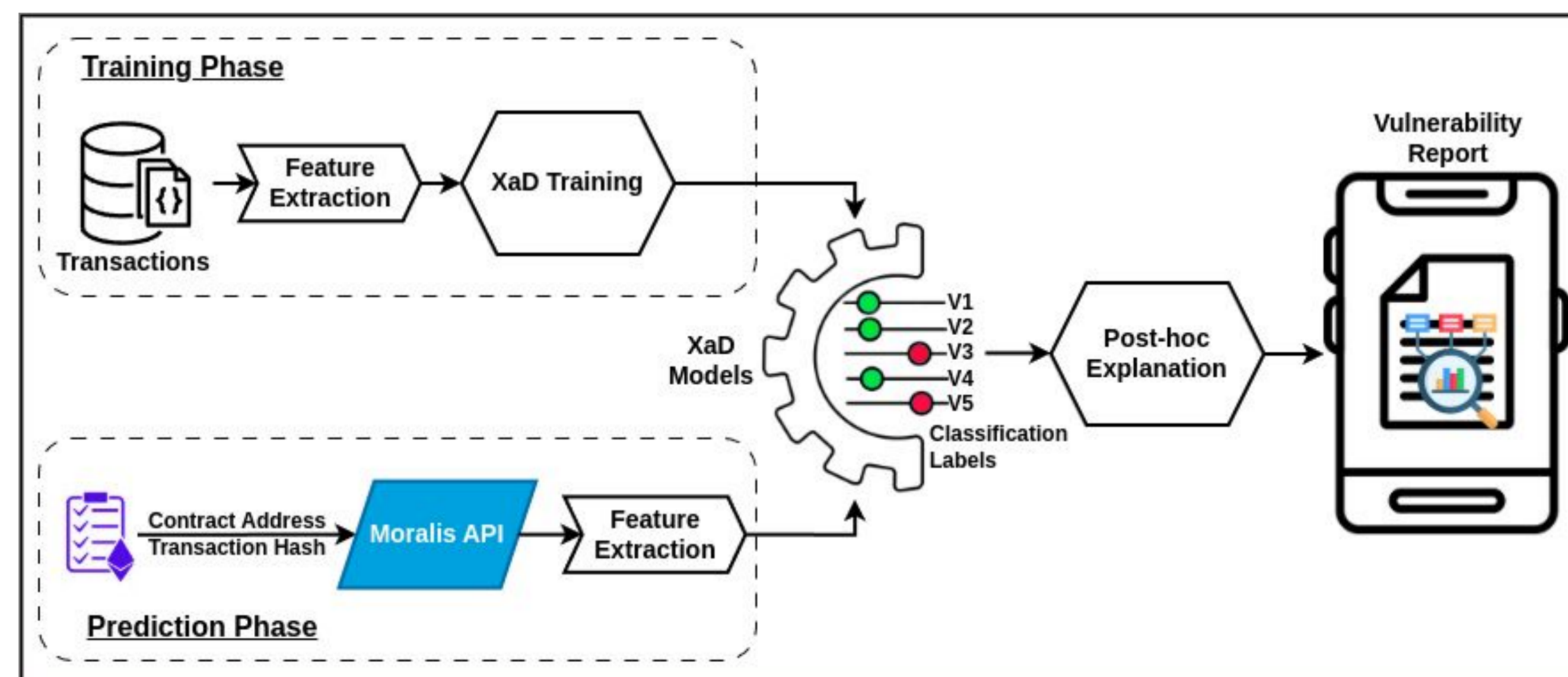
Malicious Transaction Example



Proactive Defense Workflow



How Transactions Monitoring and Analysis Work



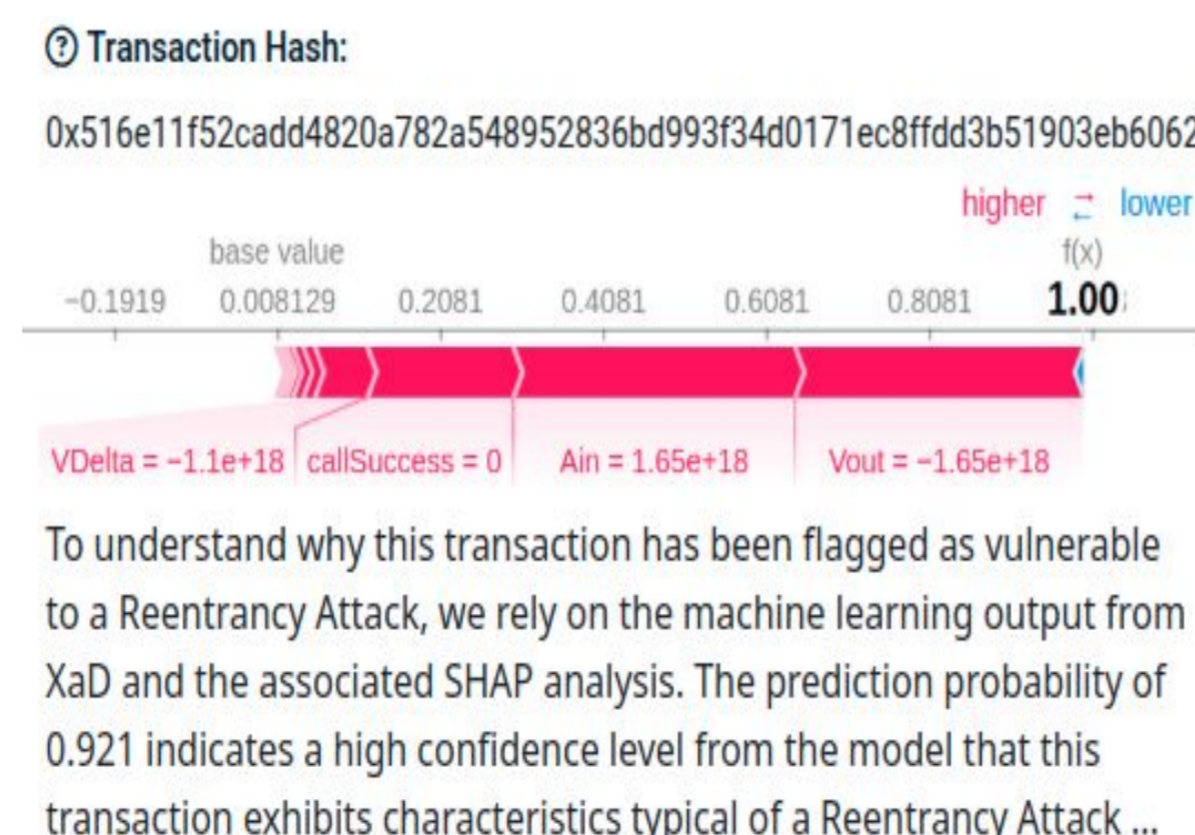
Key Takeaways

- **XAD:** First open-source, ML-based tool for real-time detection of malicious blockchain transactions.
- **Mechanism:** Monitors mempool, simulates pending transactions, and detects vulnerabilities pre-confirmation.
- **Explainability:** Offers detailed reasoning, explanations, and mitigation.
- **Rapid Detection:** Identifies vulnerabilities in **0.0014 seconds**.
- **Performance:** Outperforms **14** leading tools by **29.4%** on average.
- **Accessibility:** Web-based, no installation required.
- **Impact:** Integrates into workflows, delivering actionable security insights for developers and professionals.

✓ Scan the QR code to access our tool! 🚀



Vulnerability Report



What We Found

- **ML Power:** Well-trained machine learning detects security vulnerabilities effectively.
- **LLM Insights:** Large language models enhance vulnerability explanations and mitigation guidance.
- **High Accuracy:** Achieves **98.9%** minimum F1-score across all vulnerability types.
- **Rapid Detection:** Identifies vulnerabilities in **0.0014 seconds**.
- **Rescue Window:** Provides **14 seconds to minutes** for mitigation before transaction confirmation.

About SANAD Lab

Mission: At NYU Abu Dhabi, SANAD Lab equips software engineers with tools and insights for secure, efficient systems.

Scan QR code for author profiles and lab details.

Collaborate: Want to advance software security? Email tamer.m@nyu.edu or karim.ali@nyu.edu !



Acknowledgement

This work has been supported by the SANAD Lab.